

Traverse Panorama and Maps Display

Comprehensive network visualization



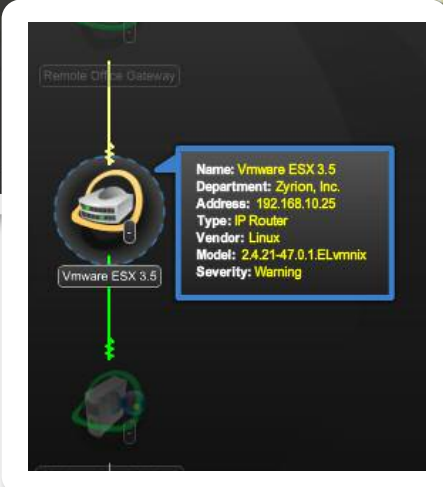
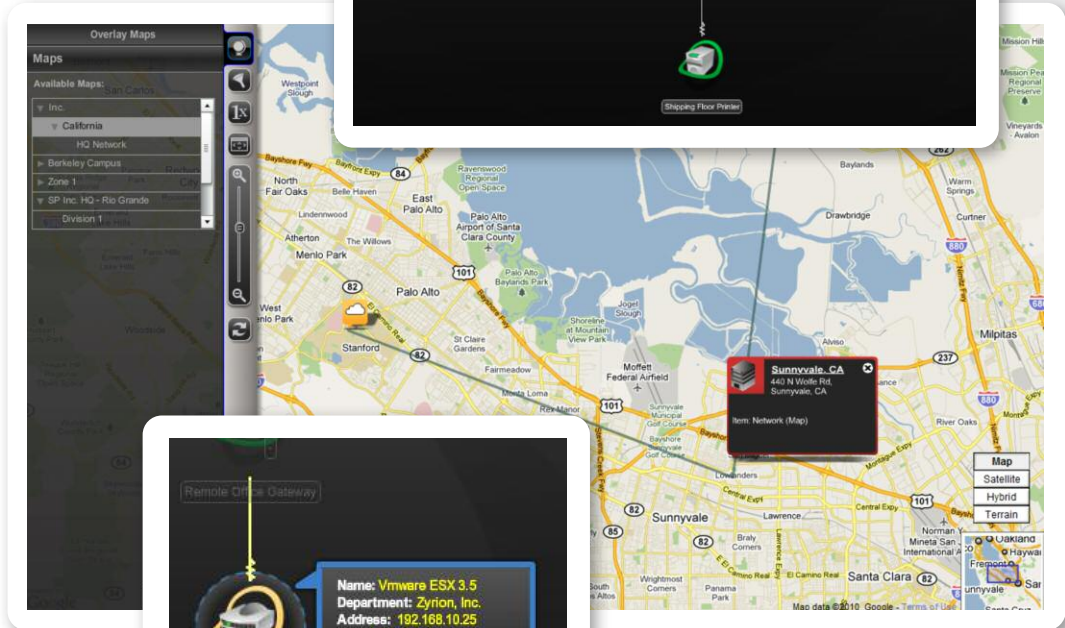
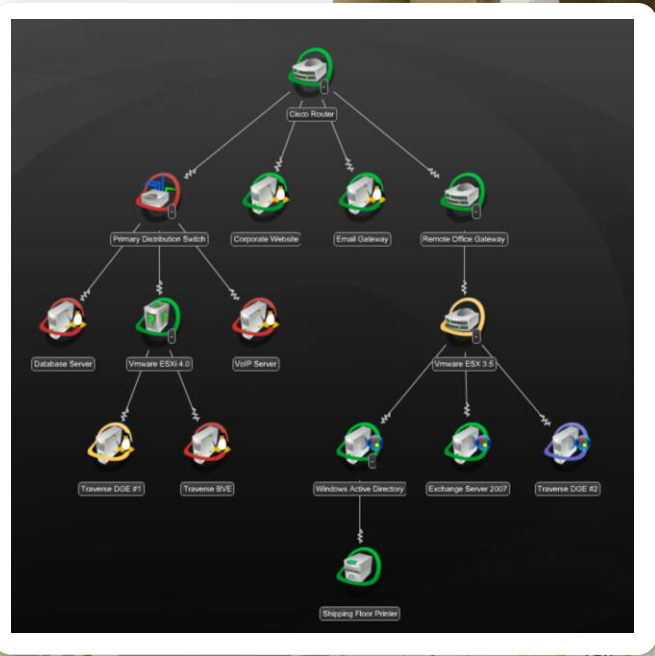
Graphical Display of the Network

As part of the Panorama and Maps features, Traverse provides a flexible visualization of the devices in the IT network that are being monitored using Traverse. Panorama provides a topology view that includes the status of the devices and the dependency relationships between them. Panorama offers four different topology layouts, flexible display filters, pan-and-zoom functionality, the ability to configure and save custom views, and the ability to add or remove device dependencies. User-specific views can be saved to be displayed upon login.

As part of the Maps feature, Traverse displays a graphical representation of devices and containers in the IT network, organized by geographical location. Traverse lets users upload their own map images so that users can, for example, place devices on a schematic of a data center. Additionally, the Google Maps API supports placing devices, containers, or other maps anywhere on a complete world, regional or local map.

Panorama Device Information

The topology can be auto-generated and fully populated through auto-discovery across multiple subnets and domains. Each device in Panorama is represented by an icon that displays the name of the device and its status. In addition, if the device is a parent, the icons display information on child nodes. Users can get more information about a device by placing the mouse cursor over its icon, which brings up an information box containing details such as device name, department, IP address, or device type. Users can double-click the name of a device to open the Test Summary page for the device.



Panorama Display Filters

Traverse Panorama supports filtering the devices shown in the topology view by type, container membership, or status. Users can also choose to highlight devices by type or status. Users can select a service container from the hierarchy of visible containers and limit the display to immediate members of the container if desired.

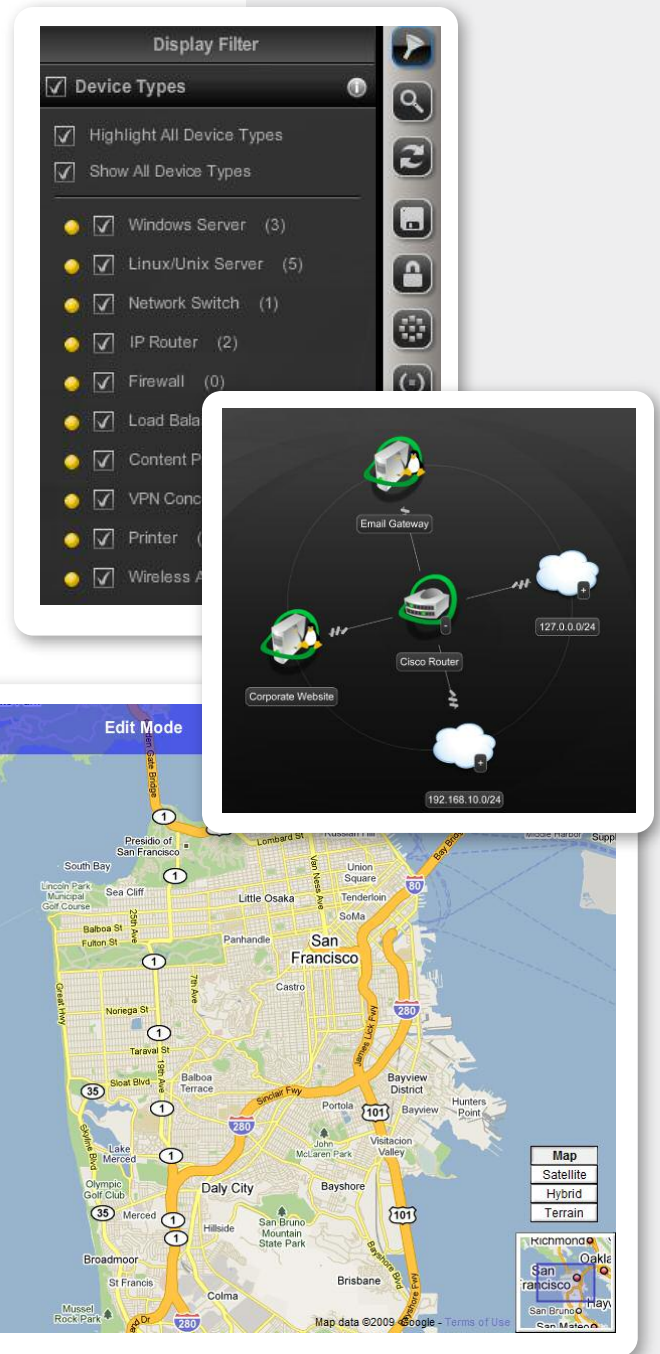
Panorama Grouping

Panorama provides different sorting and grouping methods to organize the devices in the topology view, such as device type, status and subnet. When devices are grouped by subnet, each unselected subnet appears as a cloud. Users can click the cloud icon to expand the subnet and view the member devices and their status.

Google Maps Integration

Traverse supports easy creation and configuration of geographical display maps of the network. A variety of filtering and drill-down capabilities are provided for maps. Regular expressions can be used to search for devices, containers, or lower-level maps to add to a hotspot in a given map.

Visual indicators are provided for hotspots to represent the status of the device, container, or map. When users click on a hotspot icon, they can see more detailed information for the item represented by that hotspot icon. If the item is a device, the Test Summary page for that device is opened in another window. If the item is a container, the Business Server Container Summary page is opened, and if the item is another map, that map is shown in the map view area. The combination of Panorama and Maps provides powerful visualization capabilities pre-integrated with comprehensive performance monitoring features of Traverse.



ABOUT TRAVERSE

Traverse is a next-generation monitoring solution from Kaseya, a global software solution provider with over 10,000 customers globally. Traverse's patented technology offers a distributed, scalable monitoring platform with rich data analytics and unified cloud & network management. Traverse allows enterprises and Managed Service Providers to optimize their IT operations with faster mean time to resolution for slow or failed IT services within their infrastructure. Customers leveraging Traverse include the Fortune 100 as well as small-sized and medium-sized businesses worldwide. For more information, visit www.traverse-monitoring.com

©2016 Kaseya Limited. All rights reserved. Kaseya, Traverse, the Kaseya logo and the Traverse logo are among the trademarks or registered trademarks owned by or licensed to Kaseya Limited. All other marks are the property of their respective owners.

Rev 122815